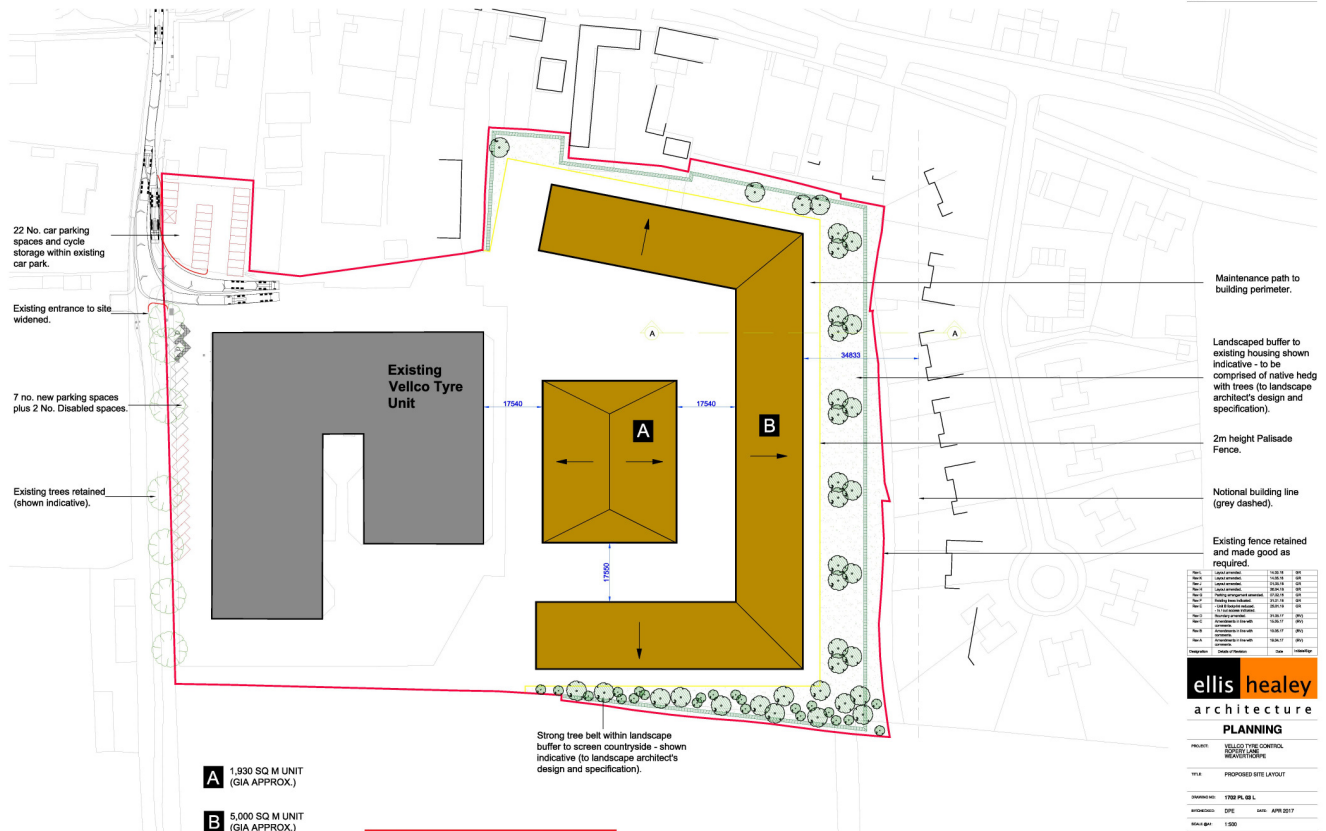


All site dimensions shall be verified by the contractor on site prior to construction.
 Do not scale from this drawing.
 Copyright © 2017 ellis healey architecture
 This drawing is the property of Ellis Healey Architecture and is not to be used for any other project without the prior written consent of Ellis Healey Architecture.
 10/17/17



- A** 1,930 SQ M UNIT (GIA APPROX.)
- B** 5,000 SQ M UNIT (GIA APPROX.)

THIS COPY HAS BEEN MADE BY OR WITH THE AUTHORITY OF RYEDALE DISTRICT COUNCIL PURSUANT TO SECTION 47 OF THE COPYRIGHT DESIGNS AND PATENTS ACT 1988. UNLESS THAT ACT PROVIDES A RELEVANT EXCEPTION TO COPYRIGHT, THIS COPY MUST NOT BE COPIED WITHOUT THE PRIOR PERMISSION OF THE COPYRIGHT OWNER.

Rev	Description	Date	By
01	Issue for Planning	10/17/17	EH
02	Issue for Planning	10/17/17	EH
03	Issue for Planning	10/17/17	EH
04	Issue for Planning	10/17/17	EH
05	Issue for Planning	10/17/17	EH
06	Issue for Planning	10/17/17	EH
07	Issue for Planning	10/17/17	EH
08	Issue for Planning	10/17/17	EH
09	Issue for Planning	10/17/17	EH
10	Issue for Planning	10/17/17	EH
11	Issue for Planning	10/17/17	EH
12	Issue for Planning	10/17/17	EH
13	Issue for Planning	10/17/17	EH
14	Issue for Planning	10/17/17	EH
15	Issue for Planning	10/17/17	EH
16	Issue for Planning	10/17/17	EH
17	Issue for Planning	10/17/17	EH
18	Issue for Planning	10/17/17	EH
19	Issue for Planning	10/17/17	EH
20	Issue for Planning	10/17/17	EH
21	Issue for Planning	10/17/17	EH
22	Issue for Planning	10/17/17	EH
23	Issue for Planning	10/17/17	EH
24	Issue for Planning	10/17/17	EH
25	Issue for Planning	10/17/17	EH
26	Issue for Planning	10/17/17	EH
27	Issue for Planning	10/17/17	EH
28	Issue for Planning	10/17/17	EH
29	Issue for Planning	10/17/17	EH
30	Issue for Planning	10/17/17	EH
31	Issue for Planning	10/17/17	EH
32	Issue for Planning	10/17/17	EH
33	Issue for Planning	10/17/17	EH
34	Issue for Planning	10/17/17	EH
35	Issue for Planning	10/17/17	EH
36	Issue for Planning	10/17/17	EH
37	Issue for Planning	10/17/17	EH
38	Issue for Planning	10/17/17	EH
39	Issue for Planning	10/17/17	EH
40	Issue for Planning	10/17/17	EH
41	Issue for Planning	10/17/17	EH
42	Issue for Planning	10/17/17	EH
43	Issue for Planning	10/17/17	EH
44	Issue for Planning	10/17/17	EH
45	Issue for Planning	10/17/17	EH
46	Issue for Planning	10/17/17	EH
47	Issue for Planning	10/17/17	EH
48	Issue for Planning	10/17/17	EH
49	Issue for Planning	10/17/17	EH
50	Issue for Planning	10/17/17	EH

ellis healey
 architecture

PLANNING

PROJECT: VELLOCO TYRE CENTRAL
 RYEDALE LANE

PHASE: PROPOSED SITE LAYOUT

DATE: 17/10/17

SCALE: 1:500

17/10/17